


Department of Engineering  
Dan Gaillet, P.E., County Engineer

3137 South Liberty Street, Canton, MS 39046  
Office (601) 790-2525 FAX (601) 859-3430

## MEMORANDUM

May 15, 2018

To: Sheila Jones, Supervisor, District I  
Trey Baxter, Supervisor, District II  
Gerald Steen, Supervisor, District III  
David Bishop, Supervisor, District IV  
Paul Griffin, Supervisor, District V

From: Dan Gaillet, P.E.   
County Engineer

Re: Sink Hole  
111 & 113 Bear Creek Circle  
Bear Creek Subdivision

A sink hole has formed due to the failure of a pipe that carries roadway storm water from Bear Creek Circle to common area, across private property between 111 and 113 Bear Creek Circle.

The Engineering Department has determined that the pipes have separated which is causing a dangerous sink hole.

It is the recommendation of the Engineering Department that the Board authorize repairs to ensure that storm water is moved from point-to-point to prevent damage to the roadway and further damage to the storm water system.

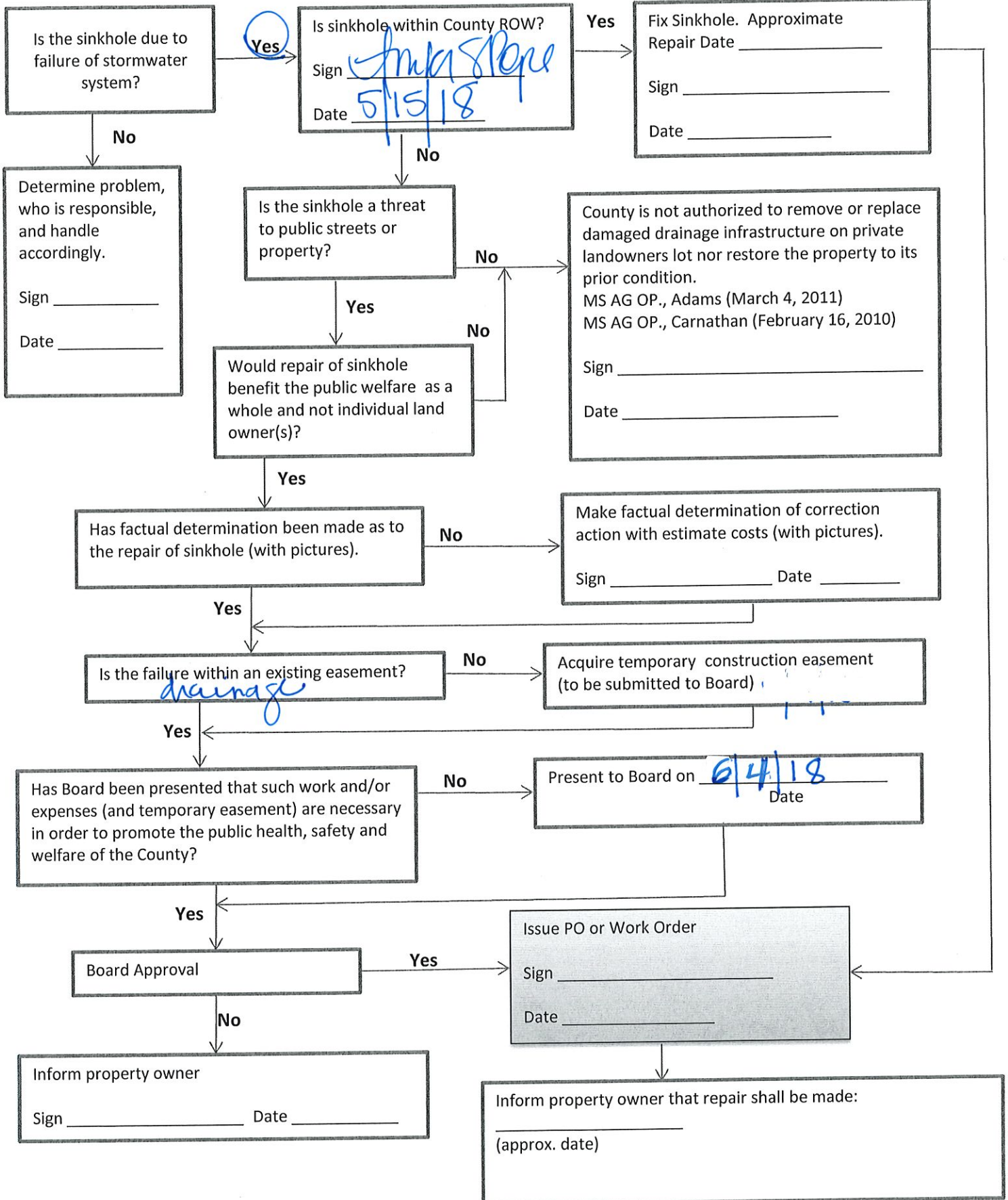
Therefore, it is in the best interest of the County and the public's health, safety and welfare to make the repairs, based on:

- Separated storm water pipes;
- A sink hole has formed over the failed pipe.

# SINKHOLE FLOW CHART

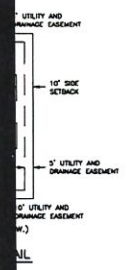
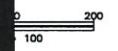
LOCATION: 111/113 Bear Creek Circle

DATE: 5/15/2018



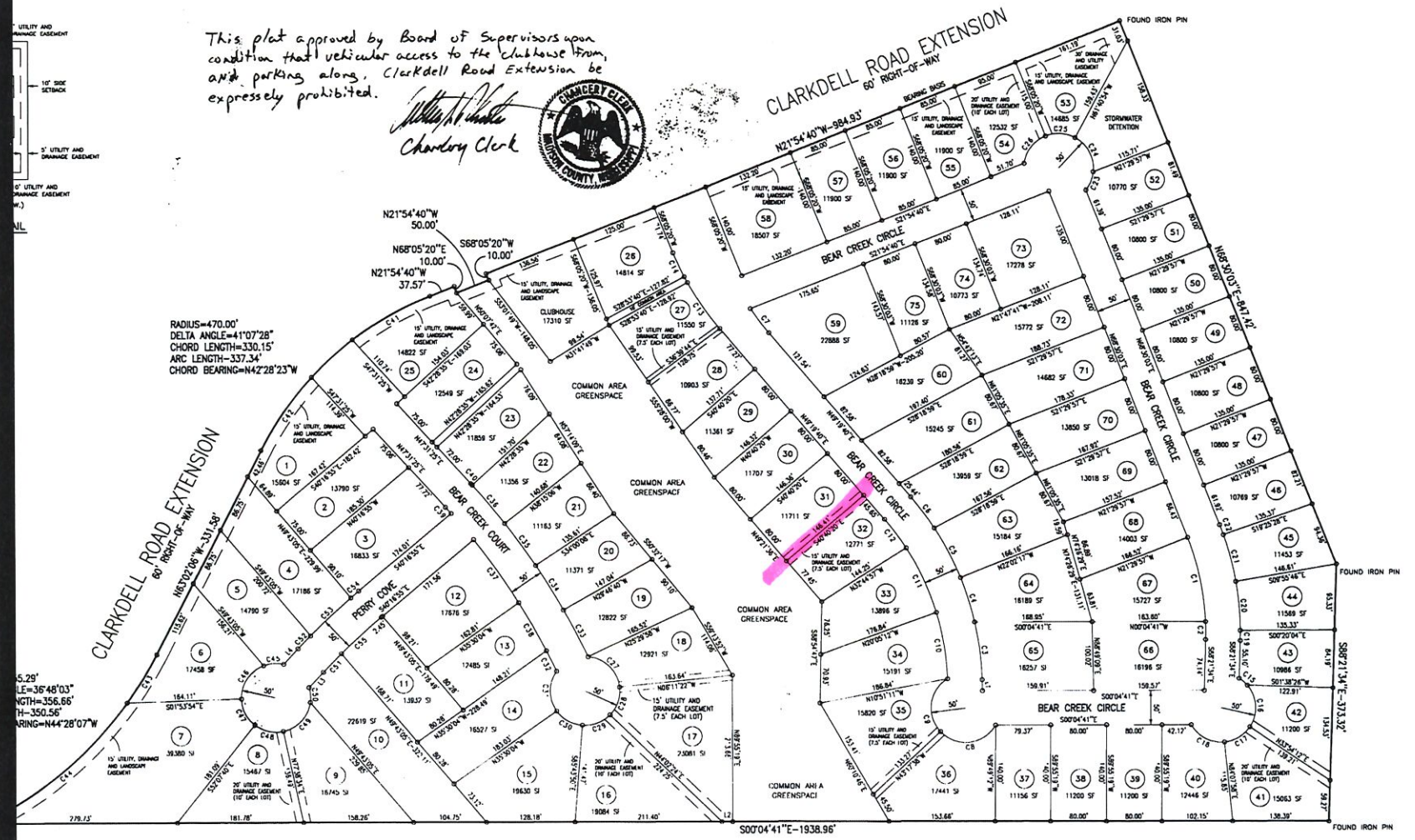
# BEAR CREEK CROSSING

SITUATED IN THE NORTHEAST 1/4 OF SECTION 27, TOWNSHIP 8 NORTH, RANGE 2 EAST  
MADISON COUNTY, MISSISSIPPI



This plat approved by Board of Supervisors upon condition that vehicular access to the clubhouse from any parking along Clarkdell Road Extension be expressly prohibited.

*Walter H. Chandler*  
Chandory Clerk



RADIUS=470.00'  
DELTA ANGLE=41°07'28"  
CHORD LENGTH=330.15'  
ARC LENGTH=337.34'  
CHORD BEARING=N42°28'23"W

S.29'  
L.E.=36°48'03"  
NGTH=356.66'  
H=350.56'  
RING=N44°28'07"W

DIST. OF DRAINING  
FOUND IRON PIN

CLARKDELL ROAD

CLARKDELL ROAD



